

南 灣 台 福 基 督 教 會 和 會 程 序

EFCSB General Membership Meeting

主後二零一二年一月二十九日

JANUARY 29, 2012

1. 書記點名..... Willis 執事
Roll Call Deacon Willis Shu
2. 開會祈禱..... Willis 執事
Opening Prayer Deacon Willis Shu
3. 牧師勉勵..... 許健全牧師
Encouragement Rev. Issac Hsu
4. 牧禱..... 許健全牧師
Pastor Prayer Rev. Issac Hsu
5. 介紹 謝冠廷牧師
Introduction of Rev. Andrew Hsieh Rev. Andrew Hsieh
6. 報告..... Willis 執事
Reports Deacon Willis Shu
7. 結算/預算..... 高陽執事
2010 Expenditure / 2011 Budget Deacon Justin Kao
8. 稽查改選..... 會 員
Election of Auditor Members
9. 臨時動議..... 會 員
Other Members
10. 閉會祈禱..... 鄭志榮牧師
Closing Prayer Rev. Byron Jung

南灣台福基督教會二零一一年教勢報告

牧師室：呂紹昌督導牧師 Rev. Jeffery Lu，許健全牧師 Rev. Isaac Hsu，鄭志榮牧師

Pastor Byron Jung，林勝弘傳道 Min. Stephen Lin，蔡豐智弟兄 Peter Tsai，王元珩傳道
Min. Bertram Wang

受洗名單：張丹，林念琦，羅官，柯玉桂，柯麗紅，Amy Tokudome，Calvin Lung，
Eric Chu，Jerry Cheng，Timothy Huang

會員轉籍名單：Gleason Chen，Rachael Chen，Eva Xu，An Wei，Christine Jung，
Helena Zhou，Gilbert Yuand Mabel Yu

獻兒名單：Thomas Cui，Abigail Chang，Chelsea Wang，James Zhao，Jonah Huang，Marcus Tsai，
Mia Tokudome，Zakary Shen，AveriLuo and Chloe Luo

2011 年大事:

1/1 總會差派呂紹昌牧師為本會的督導牧師。

今年持續每星期一至星期五早上 7:00-8:00 的晨禱會。

1/30 本會與洛城 18 台及南灣眾教會在 Wilson Park 舉辦第十屆農曆新年園遊會。

2/12，2/19 正道神學院劉王仁美師母到本會舉辦『自我認識與成長』課程。

4/3-4/23 二十一日連鎖禁食禱告。

4/16，7/9，10/29 南灣同工聯會在本教會舉行南灣華人代禱者培訓與禱告會。

5/28-5/30 華語堂在 Forest Home 舉行退修會，主題『從新得力 展翅上騰』，講員：蔡茂堂牧師。

6/13-6/15 教會覆蓋消毒。

6/16，10/2 南灣區華人教會牧者同工每月一次的牧者聯禱早餐會。

6 月華語堂成立 POPs 團契 - Parents of Preschoolers。

7/17 華中短宣。

7/10 台語堂成立路得小組。

8/10 邀請得勝者教育協會創辦人 Dr. Steven Long 在本會舉辦醫治特會。

8/12-8/14 兒童事工部舉辦 VBS (Vacation Bible School)，主題『Inside Out & Upside Down on Main Street』。

8/12 聘請王元珩 Bertram Wang 為英文堂傳道。

9/3-9/5 台語堂在 Mammoth Lake 及 Mono Lake 舉辦勞動節的野外禮拜。

9/9，9/11 本會三十一週年紀念，邀請劉昭瀛牧師在本會舉辦兩場宣道特會。

9/24 協助國際家庭衛視在本會舉行『美滿家庭研習會』，由洪黃麗薰老師主講。

10/23 會員大會選出 2012 年長老：黃保羅，黃啓富；執事：郭正隆，謝祚胤，沈育誠。

12/18 舉行聖誕讚美禮拜，三堂聯合慶祝晚會。

2011 Annual Report of EFC South Bay

Pastor Office: Rev. Jeffery Lu , Rev. Isaac Hsu , Pastor Byron Jung , Stephen Lin , Peter Tsai , Bertram Wang

Baptized: Dan Zhang , Nancy Lin , Guang Lou , Yu-Kwei Ko , Li-Hon Ko , Amy Tokudome , Calvin Lung , Eric Chu , Jerry Cheng , Timothy Huang

Membership transfer: Gleason Chen , Rachael Chen, Eva Xu , An Wei , Christine Jung , Helena Zhou , Gilbert Yu and Mabel Yu

Children dedication: Thomas Cui , Abigail Chang , Chelsea Wang , James Zhao , Jonah Huang , Marcus Tsai , Mia Tokudome , Zakary Shen , Averil Luo and Chloe Luo

Major Events in 2011:

1/1 Rev. Jeffery Lu to be the supervisory pastor for EFCSB

Continue prayer meeting from Monday to Friday 7:00 to 8:00am

1/30 Chinese New Year's festival at Wilson Park

2/12 , 2/19 Logos seminar "Self-understanding and growth" speaker: Min. Ren-Mei Wang.

4/3-4/23 21days fast and prayer chain.

4/16 , 7/9 , 10/29 Intercession training and prayer meeting.

5/28-5/30 Mandarin retreat at Forest Home.

6/13-6/15 Church fumigation.

June Mandarin congregation start POPs fellowship - Parents of Preschoolers.

6/16 , 10/2 South Bay Chinese minister's monthly breakfast prayer meeting.

7/17 China Mission.

7/10 Taiwanese congregation establish "Ruth" fellowship.

8/10 Healing conference by Dr. Steve Long

8/12-8/14 Vocational Bible School 『Inside Out & Upside Down on Main Street』

8/12 New minister, Bertram Wang to Harvest.

9/3-9/5 Taiwanese Family Retreat at Mammoth Lake and Mono Lake.

9/9 , 9/11 EFCSB's 31st Anniversary Service and Mission Rally, Speaker: Pastor Matthew Liu.

9/24 Happy family workshop by IFTV

10/23 EFCSB Membership meeting, 2012 Elder: Paul Huang, Albert Huang; 2012 Deacon: Cheng Kuo, Jack Hsieh and Kevin Sheng.

12/18 Christmas joint service and dinner celebration.

南灣台福基督教會 2012 年預定行事曆

主題：認識真神，生命轉變(希伯來書十三:20-21)

月份	日期	活動名稱 (地點)	參考節日
一月	15 日	長執會	1/1 元旦
	26 日	南加州三區聯合傳教師會	1/23 農曆新年
	29 日	2012 年定期和會 (會員大會),	
二月	5 日	聖餐 (台)	
	21 日	全台福傳教師	
	23 日	第廿七屆代表大會暨第一次總委會	
三月	11 日	長執會	3/11 日光節約時間開始
	3/18-4/7	21 天連鎖禁食禱告日	
	29 日	南加州三區聯合傳教師會	
	29 日	南加州三區行政同工暨秘書會議	
四月	6 日	受難節聖餐紀念禮拜 聖餐	4/1 Palm Sunday
	8 日	復活節讚美禮拜(洗禮)	4/6 Good Friday
	20 日	總會婦女靈修會(洛福教會)	
	28 日	台福總會領袖學院 2012 第二季領導訓練講座	4/8 復活節
五月	3 日	國定聯禱日	神學院月
	12 日	台福神學院畢業典禮	5/13 母親節
	13 日	母親節主日台華英聯合主日崇拜(華主辦)	5/28 國殤日
	20 日	神學院主日	
	20 日	長執會	
六月	1-2 日	第廿七屆第二次總委會	6/17 父親節
	3 日	聖餐 (台)	6/26 端午節
	17 日	父親節	
七月	6 日	台福總會台灣短宣	7/4 國慶日
	8 日	長執會	
	26 日	南加州三區聯合傳教師會	
	28 日	台福總會領袖學院 2012 第三季領導訓練講座	
	28 日	南加州三區 2012 第三季區會聯合同工會	
八月	5 日	聖餐 (台)	
九月	9 日	本會設教 32 週年紀念主日台華英聯合禮拜	9/3 勞工節
	15 日	南加州 2012 ABC 北美華人基督徒教育大會	9/30 中秋節
	16 日	長執會	
	27 日	南加州三區聯合傳教師會	
	27 日	南加州三區行政同工暨秘書會議	
十月	6 日	長輩親睦會	傳播中心月
	7 日	聖餐 (台)	
	14 日	傳播主日	
	21 日	和會選舉 2013 年度長執	
	27 日	南加州三區 2012 第四季區會聯合同工會	
	27 日	台福總會領袖學院 2012 第四季領導訓練講座	
	27 日	南加州教育事工研討會	
十一月	11 日	長執會	11/4 日光節約時間結束
	16 日	感恩節特別聚餐/聚會	11/22 感恩節
	18 日	感恩節主日	
	29 日	南加州三區聯合傳教師會	
十二月	2 日	聖餐 (台)	12/25 聖誕節
	9 日	長執會	1/27/13 和會
	23 日	聖誕讚美禮拜、聖誕聚餐慶祝晚會	

EFCSB 2012 Church Master Calendar

Main Theme: Know God, Be transformed (Hebrews 13:20-21)

Month	Date	Event (Location)	Remarks
January	15	Board Meeting	1/1 New Year's Day
	26	S.Cal Tri-Region MA Meeting	1/23 Chinese New Year
	29	General Membership Meeting,	
February	5	Communion (T)	
	21	EFC Ministerial Association	
	23	the 27th EFC General Assembly Meeting and The 1st EFCGA Executive Board Meeting	
March	11	Board Meeting	3/11 Beginning of daylight saving time
	3/18-4/7	21day fast and prayer chain	
	29	S.Cal Tri-Region MA Meeting	
	29	S.Cal Administrator and Secretaries' Meeting	
April	4/6	Good Friday Prayer (T/M), Communion	4/1 Palm Sunday
	4/8	Easter Sunday, Baptism	4/6 Good Friday
	20	EFC Women Annual Retreat (TBA)	4/8 Easter Sunday
	28	2Q Leadership Seminar	
May	3	National Prayer Day	Seminary Month
	12	Logos Seminary Commencement (EFCLA)	5/13 Mother's Day
	13	Mother's Day Sunday, Joint Service(T/M/E)	5/28 Memorial Day
	20	Logos Seminary Sunday	
	20	Board Meeting	
June	1-2	EFCGA Executive Board Meeting	6/17 Father's Day
	3	Communion (T)	
	17	Father's Day	
July	6	EFCGA Taiwan Short Term Mission	7/4 Independent Day
	8	Board Meeting	
	26	S.Cal Tri-Region MA Meeting	
	28	S.Cal Tri-Regional Co-worker's Meeting	
	28	3Q Leadership Seminar	
August	5	Communion (T)	
September	9	EFCSB 32 year Anniversary, Joint service (T/M/E)	9/3 Labor Day
	15	2012 ABC(EFCLA)	9/30 Mid-autumn Festival
	16	Board Meeting	
	27	S.Cal Tri-Region MA Meeting	
	27	S.Cal Administrator and Secretaries Meeting	
October	6	Senior's Day Celebration Meeting	The Month of the EFC Communication Center
	7	Communion (T)	
	14	Communication Service	
	21	General Membership Meeting (Election)	
	27	S.Cal Education Dep. Meeting	
	27	4Q Leadership Seminar	
	27	S.Cal Tri-Regional Co-worker's Meeting	
November	11	Board Meeting	11/4 Daylight Saving Time ends
	16	Thanksgiving Dinner	11/22 Thanksgiving
	18	Thanksgiving Sunday , Baptism	
	29	S.Cal Tri-Region MA Meeting	
December	2	Communion (T)	12/25 Christmas
	9	Board Meeting ,	1/ 27/13 Membership meeting
	23	Christmas Sunday 、Christmas Dinner and Celebration	

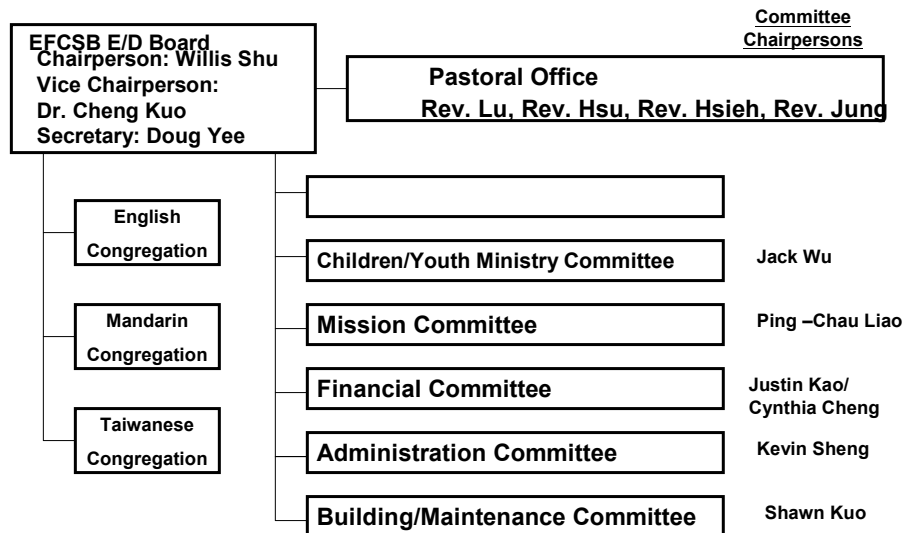
**Elder/Deacon Board Report
Yr2012 Membership Meeting
EFC of South Bay**

January 29, 2012

EFC South Bay 2011 Highlights

- **Successful first year of transition (Elder and Deacon Board working together).**
- **Reverend Andrew Hsieh hired as the Mandarin congregation pastor.**
- **Children Ministry and Youth Ministry continue to grow.**

Current EFCSB Church Structure



Focus Areas – Pastoral Office

- **Reverend Andrew Hsieh** hired as **Mandarin Congregation Pastor**.
- **Reverend Jeffrey Lu** begins his second year as supervising pastor.
- **Reverend Bertram Wang** works part-time with a growing Youth group.

Focus Areas – Finance

- **Offerings from three congregations will be entered into central account starting 2011.**
- **All expenses will be paid from central account according to the approved budget.**
- **Each congregation has a operating account and reserve fund.**
- **Pastoral Salaries to be paid out of central account - benefits held consistent for 2011.**
- **Account reconciliation and audit will be completed quarterly and by the end of the year.**

Mission Committee Report

Report for 2011

- Continued supporting and praying for Mike and Nancy Tseng in China.
- Six members from English and Mandarin Group (Peter Tsai, Wen Wen Tsai, Alice Cao, Tina Chou, Maria Huang, Yvonne Hsieh) embarked on a short-term Mission trip to the Province of Qinghai in July, 2011.
- Two members from Taiwanese Group participated in a 14-day short-term Prison Music Ministry in Taiwan during October, 2010.
- An outreach team from Taiwanese Group and the children from EFCSB Children Ministry, led by Minister Lin, shared the Christian music of Hope with the patients of a local Rehabilitation and Care Center in the South Bay area on 2 different occasions in November and December.
- Provided monthly financial support to EFC of San Gabriel River in the City of Arcadia.
- Financially supported EFC Mission Organizations: Logos Evangelical Seminary, GLECenter, EFCCC, and EFC of Chia-Nan in Taiwan.
- Held a church-wide Mission (Speaker: Rev Matthew Liu), to raise Mission Fund, and to encourage church members to participate in short-term, mid-term, or long-term missionary activities.

Plan for 2012

- Continue to financially support and pray for the on-going long-term missionary activities:
 - Mike and Nancy Tseng (Amdo)
 - Danny and Lilian Hsu (Navigators)
 - Janet Hsieh (Wycliff Bible Translation)
- Continue to financially support short-term missionary activities, if any:
 - Taiwan Short Missions
 - Short-term missions to China
 - Myanmar Short Mission
- Provide financially support to the following EFC and Non-EFC mission organizations:
 - Logos Evangelical Seminary
 - Global Life Enrichment Center
 - EFC Communication Center
- Provide some monthly financial support to the newly planted churches (2 churches maximum) in EFC's Southern California Central Region.
- With Board's blessing, hold a Church-wide Mission Rally.

台語堂主後二零一一年事工報告與二零一二年事工展望

講台信息的方向

面對末後世代，去年講台以“預備迎見主的面”為基礎，勉勵兄姊好好裝備自己，活出(恢復)神創造的形像，並追求與神建立親密關係，預備好自己在末世諸多世人的需要中，挺身而出起來服事這個世代，傳揚主的福音，引領人歸主得生。

今年(2012)將配合總會主題：“認識真神生命改變”，並將激勵兄姊在“如何聽神的聲音”之課題上，一同追求與神建立更親密的關係等，來傳講信息建立生命。

禱告操練與服事

本堂除固定每主日早禱會外，也鼓勵各小組或團契聚會時，多同心禱告與彼此作禱告服事。更感謝主，自禮拜一至禮拜五每早晨七點到八點，在我們教會均舉行晨禱會，由本地區幾位牧者和本會台華語堂的兄姊們參與，一般出席人數少則七、八人，多則十二到十五人左右，甚願有需要被服事的人，或有負擔以禱告服事人的兄姊們，一起來加入儆醒禱告，親近主服事人的代禱爭戰行列。

經由上述已連續舉行近一年半的晨禱會，神已促成南灣區華人教會牧者同工每月一次的聯禱早餐會。去年於 6/16, 10/20 兩次禮拜四的牧者聯禱早餐會在本會舉行，且早餐的供應是由本會姊妹愛心奉獻與熱心服事。

為幫助有負擔成為代禱者，有心參與代禱勇士事奉的兄姊，去年分別於 4/16, 7/9, 10/29 禮拜六上午，在本會舉行“代禱者培訓”特會，有南灣眾教會兄姊參會。

今年(2012)牧師將繼續推動禱告事工：鼓勵兄姊更多以禱告來服事神和人，並多參與各種禱告聚會，和各種代禱者的培訓課程。

探訪與關懷事工

著重在有特殊需要關懷的兄姊，牧師與長執同工以不定期方式去探訪。平時以小組和團契的同工們，在兄姊間來彼此服事互相關懷，作肢體相互牧養建造。

今年(2012)牧師計畫將配合關懷組長，對較需要兄姊的優先主動安排，每兩週一次帶領長執同工，一起去關懷探訪，禱告服事兄姊們，藉此栽培建立教會。

傳福音外展事工

本堂積極鼓勵兄姊們參與 18 號電視台，於 1/30 日(主日)在 Wilson Park 舉行的第十屆農曆新年園遊會，與南灣眾教會，Healing Place, Portal Ministry 等共同擺設兩個攤位，向參會的群眾分發福音單張，傳揚雜誌，和各教會，福音機構等宣傳單，並鼓勵兄姊們勇敢地為主作見證，向未信者作個人傳道的操練。

在今年(2012)將再計畫與南灣有心參與的教會和機構，共同於 1/29 日於 Wilson Park 舉行的新春園遊會中，鼓勵兄姊再作福音出擊，實際為主傳福音。並鼓勵兄姊們平時藉著小組和團契事工，積極去帶領慕道友及邀請未信朋友。

社區服務與關懷

在 2011 年林勝弘傳道帶領本教會姊妹團契的姊妹們和兒童事工小朋友們，參與長輩療養院的慶祝感恩節特別節目，頗獲療養院方的讚許與鼓勵，並再邀請本會於聖誕節慶祝會中再赴會表演，以致促成本會小朋友全面參與聖誕特別慶祝會的表演，擴大教會各部門參與社區關懷的層面。

今年(2012)將提議擴大此事工，到各堂會和各團契或小組的層級，盼能更實際落實社區服務與關懷，使教會與社區有更密切的結合，並帶出更有力的見證。

同工操練與禱告

將鼓勵長執，各團契，小組同工們，共同讀“疾風細語”一書，每兩個月聚集一次，一起分享，討論與禱告。盼藉由集體追求，互相共勉，更多的來經歷真神。

南灣台福教會二零一二年台語堂同工操練

宗旨：

一起研讀“疾風細語”(如何聽神的聲音)一書，再定期聚集分享，討論與學習。藉此幫助同工建立與主的親密關係，並一同在生命中，來實際經歷真活的神。

實施辦法：

- 1.時間訂於每兩個月(雙數月)最後主日，下午五點聚集一次(讀一章)，一起聚集分享，討論，學習與禱告。
- 2.遇台語同工會時，則與同工會合併舉行。
- 3.地點可分別輪流在不同同工家庭舉行，並由該同工(該家主人)負責帶領聚會。
- 4.聚會程序(以一小時為原則):
 - 詩歌敬拜讚美(10 min.)
 - 講述摘要(15 min.)
 - 分享討論(25 min.)
 - 分組禱告(10 min.)
- 5.在分享聚會後，可以安排享用簡單的茶點或晚餐，並一起在主裏交通。
- 6.歡迎凡願意渴慕親近主的兄姊，同心一起來參加，結伴共同追求與操練，並經歷個人與主的親密關係。
- 7.參加者需自備書本。(牧師可幫助集體購買。)

章 題 (進 度)	聚 集 時 間	地 點	負 責 帶 領
1.上帝想作你的摯友	02 / 26 / 2011	許 牧 師 家	許 牧 師
2.神的聲音聽起來像是...	04 / 29 / 2011	黃 啓 富	黃 啓 富
3.怎樣安靜自己	06 / 24 / 2011	廖 評 超	廖 評 超
4.怎樣使用我屬靈的眼睛	08 / 26 / 2011	郭 正 隆	郭 正 隆
5.記錄與主的對話	10 / 28 / 2011	郭 金 憲	郭 金 憲

迦勒團契 2011 事工報告

2012

會長：黃保羅

副會長：吳鎧廬

顧問：高文雄 陳瑞珠 劉寬平 呂玲嫻

靈修：盧季芬 蘇靜華

關懷聯絡：吳淑慧 吳秀子

會計：劉元和

出納：郭鳳嬌

康樂：吳楊惠美 蔡尤喜惠

活動：

每月第二、四週星期二上午九點半在教會與姊妹團契聯合聚會。

見證分享，讚美操。

講員：許牧師，林勝弘傳道或外來講員。

平安小組 2012 事工計劃

1. 每月第一及第三個禮拜三晚上八點輪流在會友家裏小組聚會.
2. 邀請慕道友參加小組聚會.
3. 配合教會各種活動.

2012年路得團契事工計劃書：

一. 團契指導：許瑛嫻牧師娘

二. 團契連絡：劉沈月娥

三. 團契目標：

1. 為關懷所有單親家庭 (喪偶/ 失婚/ 單親在美的家庭), 帶領他們在信仰基礎上扎根, 身、心、靈健康成長.
2. 鼓勵他們先建立自己, 彼此溝通, 互相支持, 一同成長. 進而服事別人, 來引導未信的單親朋友歸主.

四. 團契計劃：

1. 不定期舉辦日常生活所需專題教導.
2. 不定期舉辦資源共享, 互相教導, 互相支持.
3. 不定期舉辦在信仰上的成長.

五. 2012度預算：

\$500

2012年大餅小組-林麗連報告：

1. 2011年大餅小組平安渡過一年，可惜餅的大小沒變，未達到預期目標，2012年要加油。
2. 小組成員互相關懷，互相鼓勵，遵照上帝的教導。
腓立比書2：4 不要單顧自己的事，也要顧到別人的事。
3. 成員踴躍參加聚會，熱心參與服事。
希伯來書1：24-25 彼此相顧，激發愛心，勉勵行善，你們不可停止聚會。
4. 繼續配合教會三年讀經計劃。
5. 外展關懷事工，讓更多飢渴慕義者（增添5% 以上）分享 主的身，心，靈饗宴---大餅。
6. 加強個人禱告及靈修生活---支取更多靈糧---充實大餅的餡，好分享未信者及既信者。

2011 年事工回顧

和平小組蒙神保守，平安的經過一年。今年中，有章欣欣姊妹 (Cindy) 加入我們的小組。她家雖路途稍遠些，每次聚會仍然盡力參加。為整個小組帶來一些朝氣與活力，也使平安小組年輕不少，希望大家繼續在愛中互相扶持。

感謝主！小組的幾位成員，在今年度中都在患難中經歷神大能的手特別的扶持。先是在年初，啓富長老身體違和，經過開刀手術治療，一切都恢復正常。再是十月下旬，闕雅韻姊妹先經過外科開刀手術，然後接受化學治療。前後大大感受到弟兄姊妹們的愛心與關懷。從為她禱告，探望和為她準備各樣營養補品食物等等，心中深深感受到主內的溫馨與安慰。詩班和和平小組的成員們更是殷勤款待。她要藉此機會向南灣教會的大家庭，獻上最大的謝意。另外成員靜華姊的先生蘇教授身體欠安，也在十月中開始接受化學治療，我們也在禱告中求主特別扶持醫治。

在傳福音的事工上，我們在今年度中努力不夠，沒有特別的進展。我們求主繼續賜福，希望在新的年度中有所突破。

2012 年事工計劃

一. 小組目標：

- a. 藉著關懷，探訪與個人談道，帶領至少一位未信者歸主
- b. 加強肢體間的關懷與互動
- c. 學習聖經真理使靈命增長
- d. 藉事工傳承各個能服事主

二. 小組計劃：

- a. 每兩個禮拜有不同主題的聚會。
- b. 每季舉辦一次聚餐活動。
- c. 不定期舉辦與其他小組聯誼。

2012年仁愛小組事工計劃書：

一. 小組成員：

- a. 小組指導：葉文章牧師/葉師母/保羅兄
- b. 小組組長：劉沈月娥
- c. 副組長：美麗姐 / 掌珠姐
- d. 關懷組：鳳嬌姐 / 昭華姐
- e. 連絡組：保羅嫂 / 喜惠姐
- f. 敬拜組：新德兄 / 德福兄/ 慧音姐
- g. 司琴組：運玲姐

二. 小組目標：

- a. 加強肢體間的關懷與互動
- b. 辦理活動帶領未信者歸主
- c. 學習聖經真理使靈命增長
- d. 藉事工傳承各個能服事主

三. 小組計劃：

- a. 每兩個禮拜有不同主題的聚會.
- b. 不定期舉辦不同的戶內外活動.
- c. 不定期舉辦與其他小組聯誼.

兄弟團契2011事工報告

游景節

- 1. 每週主日學開始前二十分鐘由張肇原兄帶領關節運動.
- 2. 主日禮拜後舉辦幾次的健行運動.
- 3. 舉辦九月三日至五日三天二夜的野外禮拜.

雖然在首日抵達旅館前三十分遊覽車故障, 受到一些不便, 但次日換了新車後, 一切均進行順利. 主日崇拜後, 遊覽Mammoth Lakes 附近名湖, 到Devils Postpile健行, 晚上有同樂晚會. 回程中到Mono Lake看Tufa, 到Hot Creek Geological Site參觀溫泉溪(可惜已不能下去泡水), 路經Long Pine 參觀Manzanar Japanese internment camp memorial及Alabama Hills的奇石. 此次旅遊有五十人參加, 包括幾位慕道友.

姊妹團契事工報告

2012

會長： 吳素美

副會長：蘇靜華，洪林慎訓

靈修：蘇靜華，尤美玲

關懷：盧季芬 吳秀子

書記：闕雅韻 尤喜惠

音樂：李運玲 蘇清珪 彭俐俐

總務：王月女 洪林慎訓

聯誼：林麗聯 吳楊惠美

計劃

1. 每個月的聚會有一次由兄姊們輪流帶領聚會查經。
2. 加強關懷探訪
3. 每兩個月一次家庭聚會（二月，四月，六月，八月及十月的第三個星期日下午 2:00-4:00）聚會內容：邀請師母勉勵分享，姊妹們的生活見證及讀書分享。
4. 持續讚美操

2011 年事工回顧

- 詩班在復活節和聖誕節有特別的讚美禮拜
- 感謝主, 我們有幾位指揮, 運玲姊, 月霞姊, 清珪姊, 王瑋姊, 葉牧師和德福兄都善盡職責, 互相扶持與幫補. 加上詩班的成員們大家的盡心, 使得詩班在每個主日崇拜中都能獻詩讚美主
- 原本計劃對使用多年的詩袍加以維修後再使用. 感謝主, 有寬平, 玲茸夫婦受感動, 愛心的為詩袍奉獻. 詩班成員多受鼓勵. 經訂購後, 詩班成員已經在十二月份中穿上新的詩袍獻詩, 氣象一新
- 詩班也在今年度中訂購三本新的詩譜. 也在聖誕節的讚美禮拜中充分使用並獻上新詩

2012 年事工展望

- 復活節有特別的讚美禮拜
- 聖誕節有特別的讚美禮拜
- 重新整理幾本舊的歌譜, 使詩班所獻的詩更加優美且活潑有力
- 不定期有特別的練唱並交誼

Mandarin Congregation Report

Revival Conference

Years back when Mandarin congregation had its retreat, we experienced God's Spirit working among brothers and sisters, the retreat gave the congregation a spiritual shake up and a new and refreshed heart toward the Lord. Our 2011 Memorial Day weekend retreat carried the same vision; we called to the Lord for yet another transformation of our mind and heart. Rev. Mathew Tsai was the speaker, he used Isaiah 40:31 "but those who hope in the LORD will renew their strength. They will soar on wings like eagles; they will run and not grow weary, they will walk and not be faint" as the retreat theme. In his 7 series of sermons, he focused his sermons on strengthening the deity of God in brothers and sisters' heart, and used biblical models to encourage and reinforced the truth. The retreat draws people from various churches, as far as Tucson Arizona, and as close as our own Taiwanese congregation. The retreat was a success, many rededicated their lives to the Lord during an altar call on Pastor Tsai's last sermon.

Short Term Missions

Six members of EFC congregations participated in a short term mission to Qinghai. Five of the participants are from Mandarin congregation. The team had carried out various missions such as hosting a 3 days VBS for the children ages 3 to elementary school of missionaries serving in the QH area. Another 3 days VBS was also conducted for children of a local house church. The team had the opportunity to revisit local Christian family and churches which the contact was established during past mission trips. God also opened door for the team to work with local missionaries and travel to rural region of QH for the chance to visit Christians there and offer ministry and support. God also opened the door for the opportunity to minister to unbelievers in the hospital. Peter Tsai maintains regular contacts with missionaries there and has built up continuous spiritual and doctrinal support as he has made several mission/training trips to China throughout the year. Many seminary students have benefited from his visits.

Baptism

We have five people baptized this year - Zhang Dan, Nancy Lin, Lou Guang, Li-Hon Ko and her sister Jolin.

New Fellowship

Parents of Pre-School (POPS) Fellowship formed last year. The fellowship is lead by Mrs. Lu. Mrs. Lu uses her extensive training in child education and the Word of the Lord to help parents with young toddlers in the everyday scenario of raising children. For those who are interested, please contact Sherry Liu for meeting schedule.

Pastoral Search

Mandarin congregation, after many years of praying for a congregational pastor, this year, the Lord has guided Pastor Andrew Hsieh to shepherd His church. Many thanks to Peter Tsai who leads the searching committee member who worked diligently in the last few years.

南湾台福基督教会华语堂 Emmanuel Fellowship 2012 目标和计划

1.查经进度

在过去的 2011 年,小组查考完成“使徒行传”全卷。通过查考,我们在经文内容上有所认知,但是有些地方了解不够深入。查考使徒行传鼓励小组成员对神的话语追寻并行在其中,使我们受益良多。今年一月开始新的书卷“雅各书”, 雅各书更贴近实际生活,引起了小组成员很多关于日常生活琐事的讨论,可以看出,神的话语对我们有一步一步的影响,希望行在主的话语中。

2.受浸成员

感谢主带领,小组成员罗官弟兄去年 11 月受浸归入主的名下。因刚刚成为门徒,更加求神继续保守带领他,也需要小组更多的扶持。希望神带领更多的慕道友加入,也让我们有从神而来的能力去帮助新朋友。

3.灵命成长和培养

小组成员有工作的人数在一半以上,成员的日常灵修生活不确定,有待了解。需要鼓励大家每日有固定的灵修。例如每天读圣经,祷告,唱歌感恩赞美。另,受浸后,新成员的见证,也是帮助大家灵命成长的方法。小组在这些方面需要加强。

4.团契活动

跟神建立更亲密的关系,小组需要更多互动联系。我们可以借助团契聚餐;春季郊游;姐妹喝茶谈心;关怀访友等方法吸引新朋友,神的爱也被传递在其中。

5. 2012 年团契预算

没有特别的活动需要预算支出,请保持向往年一样。

6.欢送会

2011 年底,以马内利小组服侍的同工许承和他的太太 Jessie 搬去他州。在欢送会上大家彼此感恩分享,特别是 Jessie 有感人的分享。他们有需要待祷的事情,小组每星期五晚上聚会待祷。

Young Couples' Fellowship
雅歌團契
2011 主題 – 全地敬拜，萬民頌揚
(詩篇六十六章 4-8 節)

In the year of 2011, Young Couples Fellowship (YCF) shifted our focus on bible studying on Old Testament to re-strengthen our knowledge of New Testament. The fellowship is guidance led by Jack, Yvonne, Kevin, and others. In addition, we also continue to finish our special topic studying related to parents and kid relationship through reading a book named “Raising Spiritual 2nd Generation” as well as combining with other fellowships for special programs or events.

1. Bible study – 2011 YCF completed bible studying on 馬可福音 and moved on to 路加福音 chapters. This year we plan to continue this path to have more bible study sessions.

2. “Raising Spiritual Second Generation” – As our children mature into adolescents, we all recognize the importance of spiritual growth as well. In the 1st half of 2011 YCF continue studying the book of “Raising Spiritual Second Generation” as our topic studies and rotate with the bible study every other week. We have completed all chapters at the end of June, 2011.

3. Sharing God love - We encouraged brothers and sisters to share their experience with God in 2011. During the year, we invited Yvonne to talk about her mission trip experience in China during the fellowship time. At the last four months of 2011, we introduced a more relaxed program on the last Friday of every month to attract more new comers to join with our fellowship. We had two sharing nights, movie night and dine out to get closed to each other. We encourage brothers and sisters to care about each other and care the people near us. We inspire to spread the Good news to those who are still seeking. We had several great BBQ time in Jack's house that we build up our friendship and love in Christ.

4. Several special events were organized to allow the families to social with each others as well as a joint fellowship program with a special guest or speaker. We invited Rev Luke Zhang, Daniel Sher (佘老師), 蔡茂堂牧師, 王文衍, 總幹事 of 校園福音團契, 劉昭瀛牧師 and Rev. Andrew Hsieh during this year as our guest or speaker. We also joined a meeting with Doug Addison for the topic of “dream interpretation & prophetic evangelism” in March, 2011. Lastly we involved with church retreat - 南灣台福基督教會華語堂靈修會, 2011. We actively fundraising money for retreat through selling T-shirts and inviting our friends to join the retreat.

Gleason Chen

Young Couples' Fellowship
雅歌團契
2012 主題 – 認識真神，生命轉變
(希伯來書十三章 20-21 節)

This year we will continue to focus on our spiritual growth and maturity in Christ as one, and to reach out to other brothers and sisters who have not yet know the love of Christ.

To accomplish this, YCF will –

- Diligently study the Word of God – continue study New Testament and introduce more special teaching topics
- Encourage brothers and sisters to follow the one-year Bible reading plan.
- Incorporate topical studies such as prayer, mission, devotion, and praise, etc.
- Outreach/mission functions within the South Bay community.
- Promote inter-fellowships and inter-congregational activities and sharing.
- Promote retreat and other church activities.

Gleason Chen

南灣台福基督教會華語堂社青團契 2012 年團契目標及計畫

社青團契目前固定在每週五晚上八點在教會教育館二樓的教室聚會，偶爾也會在契友家聚集。通常隔週是查經的聚會，2011 年查考保羅書信，目前在查提多書。2012 年將查考舊約小先知書，並將邀請屬靈長輩做靈命與專題分享。平時除了週五團契聚會之外，社青的弟兄姊妹也會彼此分享生活體驗、一起出遊健行、屬靈書籍讀書分享、與其他教會的社青團契連接友誼，在追尋永恆生命的路上，我們彼此鼓勵，向前奔跑。

社青團契的成員除了原本在南灣教會聚會已久的弟兄姊妹之外，近年，神也帶領一些在外地求學，畢業後到南灣地區就業的社會青年來到教會當中。但願 神繼續使用社青團契，使這些離鄉背井，隻身在美的慕道友 / 基督徒，因著弟兄姊妹彼此的關懷，使他們感受到 神的愛，並有機會認識且委身於耶穌基督。

2012 年團契預算： \$2,500.00

Young Adult Fellowship

- Young Adult Fellowship – 101 brothers and sisters on the mailing list
- Bible Study – Angie, Bonnie, Emily, Justin, Lihan, Marian, Mary, Olivia and Sandy
- Outing – Eva, Hai Hua, Homer, Jiang Ling, Jimmy, Mike, Natalie, Sean Liu and Sean Ma

Birthday dinner

Movie night

Game night

House party, wine tasting and Hollywood Bowl

- Joint Event with Other Fellowships

Bread of Life – Tracy Chen (tracy6127@yahoo.com)

EFC Irvine – Phillip Chou (pchou8888@gmail.com)

EFCLA – Amy Sun (blueamysun@gmail.com)

哈利路亞團契

聚會時間：每月第一、第三 星期三 10:30 AM 在教會交誼廳

平均聚會人數：18 位。

2011

1. 舉辦兩次郊遊活動。
2. 主題，見證分享。
3. 請外人來分享

2012 年計劃：

繼續去年的型式，將舉辦郊遊活動，主題或見證分享，請外人來分享，短宣分享，並增加禱告會及請牧師查腓立比書。

Amy Lam 報告

Jan. 18, 12

Harvest South Bay

2012 Goals

Vision:

Harvest is beginning 2012 with a Mission Study: a prayerful process of finding God's particular vision and goals for our church and submitting ourselves to a unified focus in ministry. During our Sunday School times we will study God's plan for the church as well as the gifts, opportunities and spheres of influence unique to Harvest.

Sunday Service

2012 begins a new start time for Harvest South Bay. We have pushed our service time back to 10:00 AM in order to coincide with the start time of our Children's ministry. Our hope is to not only encourage timeliness but to help our members understand the unity of our ministries through simple coordination.

From the pulpit, Harvest will be seeking to learn God's heart for the Gospel in our own lives and in the lives of others as we study Romans chapters 1-11. As the year progresses we will return to the Old Testament to understand God's inclusion of the outsider in the book of Ruth. Finally we will end the year in a study of the superiority of Christ in the book of Hebrews.

Fellowship

Through all of our Fellowship ministries, we seek to deepen our relationship with one another and with the Lord- praying together more, discussing issues that are close to the heart of God and growing in accountability. 2012 will mark a concerted effort to reach age groups which are not currently involved in fellowship groups as well as the expansion of our current groups.

Many of our fellowship groups have emerged from their infancy recently and are beginning to become more consistent in their content and makeup: the IGNITE fellowship and the Adult family fellowship have been running in their current form for less than a year. 2012 will be a time for these fellowship groups in particular to turn their eyes outward to inviting others and ministering to those without a church or who are not believers.

Leadership:

The goal of our leadership team in 2012 is to emphasize the importance of spiritual leadership within the congregation and spiritual leadership by the congregation. We will be challenging one another- spurring one another along in the area of love and good deeds. Our hope is to lead the congregation in a more intimate walk with Christ with a greater understanding of the role of the gospel in their lives.

2012 will continue with the EFCSB Board Chair and Secretary positions occupied by members of Harvest. As such, part of our congregation's goal is to foster a healthy church, spur love between believers, and promote biblical leadership.

Sunday School:

Sunday School will be following a new paradigm to train us in three relationships: our relationship upward with the Lord, our relationship outwards to the world, and our relationship inwards in ministry to the church. This will lead us to studies in theology that are both inspiring and practical.

Harvest South Bay

2011 Review

Community:

In the first quarter of 2011, Harvest was involved in an intensive study of ecclesiology together for 50 days. The curriculum, called “The 50-day Spiritual Adventure” was designed to deepen community, align our hearts toward common themes, and spark discussion concerning our role in God’s Great Commission. During the time the congregation was asked to study common material for quiet times and small groups.

Sunday Service

Sundays throughout 2011 marked a steady increase not only in attendance but a growth in the range of worshippers. Harvest has seen more youth and young adults on Sunday and a greater consistency overall.

During 2011 we studied a good deal of the Old Testament, beginning in the book of Nehemiah, and including both Jonah as well as the Egyptian Psalms of Hallel. In between we studied all of Jesus’ parables throughout the book of Luke.

Fellowship

Not only did our Family Small group move to Friday night to coincide with the Children’s Ministry, it folded into a second family group to form a larger family fellowship. This has enabled Harvest to have a larger presence on Friday night. The presence of Youth, Children and many adults on campus on the same night provides a greater sense of shared ministry and critical mass for inviting others.

Teaching

The first quarter of our Sunday School year was spent studying how the Gospel changes all of our motivations – not simply in our redemption, but also in our sanctification. This 9 week study taught us how we too often minimize the work of Christ and rely on our own strength.

The final quarter of the year followed up the first study as we sought to grow in sanctification through Jerry Bridge’s *The Pursuit of Holiness*. This was a natural follow up and helped the congregation understand the majesty of our Lord

Leadership:

2011 marked the first year in any EFC that the chairmanship of the Board has been occupied by a member of an English congregation. That change has challenged our congregation to look to the future of EFCSB as a whole and how we can participate, grow in maturity, and understand the Lord’s will for our church

In the latter part of the year, our congregation added Rev. Bertram Wang as part time staff. Rev. Wang had served in our congregation for many years and continued to grow Christ’s influence in our youth and young adult population as well as helping lead throughout the rest of the congregation.

Membership:

Through an intentional effort Harvest added many members in 2011 who had been attending the congregation by never formalized their membership. Also, many took advantage of a baptism class early in the year and were baptized. Two babies were dedicated as we celebrated the miracle of their birth and their parents’ affirmation to raise them in the Lord.

2011 EFCSB/HARVEST SOUTH BAY CHILDREN & YOUTH MINISTRY (CYM) REPORT

Our average Friday attendance for 5th grade to Toddlers are: 32 children.
Our average Friday attendance for 6th grade to High School are: 10 youths.

Our average Sunday attendance for 5th grade to Toddlers are: 35 children.
Our average Sunday attendance for 6th grade to High School are: 10 youths.

Sunday School program:
5 classes (ranging from Toddler to 5th grade)
15 regular teachers on rotation
10 teacher's aides on rotation

Our 2011 Bible curriculum included:
Systematically going through the New Testament books (we are currently on Ephesians)
The Gospel Message has been taught and reviewed
Weekly training in the areas of prayer, worship, Bible memory, and Christian living

Student-Led Worship Team:
We currently have 9 students on our student-led Worship Team

Our 2011 activities included:
April - Annual Easter program and carnival
May - Annual Mother's Day program
August - Annual V.B.S. summer program
October - Annual Pumpkin Carving contest
November - Visiting and singing at the local Senior Center
December - Annual Operation Christmas Child program
December - Annual Christmas program
December - Visiting and singing at the local Senior Center

EFCSB Taiwanese Congregation

Income & Expenses

January - December 2011

	Total
Income	
Operation Fund	\$10,000.00
Special Offering for Choir in 2010	\$4,620.00
Total Income	\$14,620.00
Expenses	
Fellowship	
Choir	
Honorarium Jan. ~ Dec.	\$5,280.00
Gift for Choir Director	\$53.98
Choir Gathering	\$413.92
Robe	\$1,421.26
Supplies	\$36.53
Ruth	\$500.00
Christmas Crew Dinner	\$270.00
All Fellowship Expenses	\$457.24
Total Fellowship Expenses	\$8,432.93
Others	
Bank Charge	\$19.50
Total Others Expenses	\$19.50
Total Expenses	\$8,452.43
Balance	\$6,167.57



EFCSB Mandarin Congregation

Income & Expenses


January - December 2011

	Total
Income	
Operation Fund	\$10,000.00
Interest Earned	\$9.40
Total Income	\$10,009.40
Expenses	
Fellowship & Education	
Emmanuel	\$579.97
POPS	\$275.07
Young Adult	\$222.66
Young Couple	\$158.20
Worship Team	\$274.87
Hallelujah	\$798.69
In Reach	\$1,628.50
Out Reach	\$147.94
Adult Sunday School	\$2,167.05
Seminar	\$2,270.00
Total Education & Fellowship Expenses	\$8,522.95
 Guest Speaker	 \$4,100.00
 Missions	 \$239.97
 Pastoral Search	 \$2,251.45
 Others	
Bank Charge	\$20.00
Books & Library Supplies	\$138.53
Due & Subscriptions	\$119.40
Flowers	\$143.88
Total Others Expenses	\$421.81
 Total Expenses	 \$15,536.18
 Balance	 (\$5,526.78)

NOTE:

1. RESERVED FUND BALANCE: \$ 166,611.87

Mandarin Retreat Report	
Total Retreat Offerings	\$26,843.62
Total Expenses	\$25,433.50
Travel Expenses for Speaker	\$743.50
Total Retreat Expenses	\$26,177.00
Retreat Balance	\$666.62



EFCSB English Congregation

Income & Expenses

January - December 2011

	Total
Income	
Operation Fund	\$10,000.00
Miscellaneous Income	\$1,261.17
Total Income	\$11,261.17
Expenses	
Education & Fellowship	
Adult Fellowship	\$14.29
Adult Sunday School	\$567.34
Children's Ministry	\$156.60
Youth	\$15,724.31
Education/Scholarship	\$175.00
Total Education & Fellowship Expenses	\$16,637.54
Encouragement Ministry	
In Reach	\$1,118.98
Out Reach	\$371.55
Total Encouragement Ministry	\$1,490.53
Guest Speakers	\$150.00
Others	
Bank Service Charge	\$3.00
Building Improvement/Decoration	\$574.44
Supplies	
General	\$172.21
Office	\$145.47
Others	\$60.29
Rent	\$100.00
Retreat	\$264.00
Sermon Preparation/Delivery	\$28.48
Total Others Expenses	\$1,347.89
Total Expenses	\$19,625.96
Other Income	
Fund Transfer Reserved Fund For Youth Ministry Speaker	\$15,000.00
Total Other Income	\$15,000.00
Balance	\$6,635.21

NOTE:

1. RESERVED FUND BALANCE: \$ 40,000.00

X I have not reviewed
the bank statement
of reserved fund account




EVANGELICAL FORMOSAN CHURCH OF SOUTH BAY
BUDGET FOR YEAR 2012

	INCOME	BUDGET	NOTE
GENERAL FUND			
ESTIMATED OFFERINGS 預估奉獻	497000		\$ 30,000 FROM ENGLISH'S RESERVED FUND FOR BERTRAM; \$ 10,000 FROM MANDARIN'S RESERVED FUND FOR PASTOR'S HSIEH'S RELOCATION.
RENT 租金收入	31640		*SEASIDE 1,800*11, KOREAN 800*12, CHINESE 320*7
TOTAL INCOME 總收入	528640		
(1) SALARIES 薪資			
PASTOR SALARIES 牧師薪資		176500	
PASTOR INSURANCE 牧師醫療保險		37000	*600*12*2+ 20,000 + 2400
PASTOR PENSION 牧師退休福利金		17650	
MINISTER HONORARIUM 傳道人事奉謝禮		31300	*LIN: \$ 4,000.00; BERTRAM: \$ 27,300.00
PASTOR SABBATICAL FUND 牧師安息年薪資基金		9000	5%
ADMINISTRATIVE SALARIES 行政秘書薪資		10200	*850*12
CYM DIRECTOR SALARY 兒童少年事工主席薪資		24000	*2,000*12
SUB-TOTAL 支出額		305650	
(2) EFCGA 總會			
TITHE 十一奉獻		32400	*AVERAGE \$ 2,700*12
(3) BUILDING 教堂維護維修			
BUILDING FUND TRANSFER 建堂基金		15000	*AVERAGE OFFERING IN 2011
MAINTENANCE/REPAIR 教會維修		30000	*27,000 PER SHAWN KUO, \$ 3,000 GARDENER
CLEANING EXPENSES 教會清潔		12000	*SYLVIA \$ 750*12
SECURITY 教會保全		900	
SUB-TOTAL 支出額		57900	
(4) MISSION 宣道			
MIKE & NANCY TSENG 支持曾傳道青海藏族事工		12000	*\$ 1,000*12
DANNY & LILIAN HSU 英文堂支持傳道事工		3000	
JANNET OF WYCLIFF 支持 WYCLIFF 聖經翻譯中心事工		3000	
AMY & MAKOTO 支持英文堂 AMY & MAKOTO 未來宣教事工		3000	
LOGOS 台福神學院		2000	
GLEC 普世豐盛生命中心		2000	
EFCCC 台福傳播中心		500	
MISSION EDUCATION 宣道教育課程		500	
LONG & SHORT TERMED MISSION PROJECT SUPPORT 長期及短期宣道支持		9000	
EFC CHURCH PLANTING SUPPORTS 台福教會植堂支持		2400	*EFC GLENDORA \$ 200*12
SUB-TOTAL 支出額		37400	

(6) FELLOWSHIP 團契			
CALEB 台語迦勒		500	
BROTHERS 台語兄弟		500	
SISTERS 台語姊妹		500	
RUTH 台語路得		500	
CHOIR 台語詩班		6500	
ENGLISH ADULT FELLOWSHIP		250	
ENGLISH ENCOURAGE IN-REACH		750	
ENGLISH MEN'S FELLOWSHIP		500	
ENGLISH SISTER'S FELLOWSHIP		500	
ENGLISH WORSHIP		750	
MANDARIN YOUNG COUPLE 華語雅歌		500	
MANDARIN YOUNG ADULT 華語社青		500	
MANDARIN EMMANUEL 華語以馬內利		500	
MANDARIN HALLELUJAH 華語哈利路亞團契		500	
MANDARIN POP 華語小小孩團契		500	
MANDARIN WORSHIP TEAM 華語敬拜讚美團		500	
MANDARIN FELLOWSHIP SPECIAL PROGRAM 華語團契講座		500	
CM FELLOWSHIP 兒童事工		5000	
YOUTH FELLOWSHIP 少年事工		1500	
SUB-TOTAL 支出額		21250	
(7) OTHERS 其他費用			
ADVERTISEMENT/PUBLIC RELATIONS/OUTREACH* 廣告公關宣傳		2000	
AGAPE LUNCH 愛餐		22000	*\$ 400*50+SPECIAL PROGRAM
AUTO GAS 牧師探訪汽油		2400	
BANK CHARGE 銀行費用		200	
BOOK, STUDY MATERIALS, CURRICULUM 書籍教育材料		1000	
EDUCATION-CONFERENCES, CLASSES, SEMINARS 講座, 課程, 研討會		1000	
EQUIPMENT PURCHASE/LEASE 器材(影印機) 租金及耗材		2000	*\$ 125*12 + \$ 500
INSURANCE LIABILITY 教會責任險		4500	
INSURANCE WORKERS COMP. 員工保險		1000	
INTERNET & WEBSITE HOSTING 網路及網站域名		1200	
FESTIVAL & SPECIAL PROGRAM 節慶及特別節目		2000	
GUEST SPEAKER HONORARIUM 講員謝儀		3500	
KITCHEN SUPPLIES/GROCERY 廚房用具及食品雜貨		4000	
MANDARIN PASTOR RELOCATION 華語堂牧師搬遷費用		10000	*SUBJECT TO CHANGE IF NO PASTOR IN 2012
OFFICE SUPPLIES 辦公器材		1000	
PHONE 電話及牧師手機		3120	
PROPERTY TAX 地價稅		2500	
SANCTUARY SERVICES 正堂器材及節慶花卉		1000	
SUBSCRIPTION 刊物訂閱		500	
UTILITIES 水電瓦斯公用品		8500	
SUB-TOTAL 支出額		73420	
TOTAL EXPENSES 總支出額		528020	
BALANCE 結餘		620	

EFC SOUTH BAY, FINANCE DEPT. REPORT

COMMON AFFAIR, LOVE AND MISSION

YEAR: 2011

DATE: JAN. 29, 2012

ITEM		INCOME	EXPENSES	NOTE
OFFERINGS	TAIWANESE	\$120,296.25	\$10,280.00	INCOME INCLUDES \$ 15,000.00 FOR BERTRAM
	ENGLISH	\$113,733.10	\$10,000.00	
	MANDARIN	\$107,013.33	\$10,000.00	
	CHILDREN	\$145.58	\$0.00	
	SUBTOTAL	\$341,188.26	\$30,280.00	
RENT	SEASIDE	\$21,600.00		Jan. 2011~Jan. 2012 Dec. 2010~Dec. 2011
	KOREAN	\$10,400.00		
	CHINESE SCHOOL	\$1,640.00		
	OTHERS	\$250.00		
	SUBTOTAL	\$33,890.00		
AGAPE	LUNCH OFFERING	\$23,077.00	\$21,442.21	
LOVE	EARTHQUAKE	\$6,309.00	\$6,309.00	\$ 300.00 FROM 2010 OFFERING.
	GRACE & LOVE	\$4,130.00	\$4,430.00	
	EFC BOYO	\$4,430.00	\$4,430.00	
	SUBTOTAL	\$14,869.00	\$15,169.00	
MISSION	GENERAL SUPPORT OFFERING	\$5,120.00		CHURCH SUPPORT \$ 12,000.00 CHURCH SUPPORT \$ 3,000.00 CHURCH SUPPORT 2/3. CHURCH SUPPORT \$ 2,000.00 CHURCH SUPPORT \$ 2,000.00 CHURCH SUPPORT \$ 500.00 CHURCH SUPPORT \$ 3,000.00 \$ 200.00/MONTH
	OMF/MIKE AND NANCY	\$500.00	\$12,500.00	
	MIKE/NANCY TRANSLATION SUPPORT		\$800.00	
	WYCLIFF/JANNET	\$0.00	\$3,000.00	
	QINHAI 2010 SUMMER	\$8,526.00	\$16,027.52	
	TAIWAN MISSION	\$730.00	\$1,648.00	
	GLEC 普世豐盛中心	\$0.00	\$2,000.00	
	LOGOS 正道神學院	\$130.00	\$2,130.00	
	EFCCC 台福傳播中心	\$610.00	\$1,100.00	
	EFC CHIANAN	\$1,930.00	\$4,930.00	
	EFC GLENDORA	\$0.00	\$2,400.00	
	SUBTOTAL	\$17,546.00	\$46,535.52	
BUILDING	SUBTOTAL	\$47,836.62	\$47,836.62	FOUR 1ST PAYMENT OF ROSEHILL LOT
OTHER	INTERESTS	\$84.91		MEDICAL INSURANCE PLAN CHANGE REFUND PREMIUM
	MANDARIN RETREAT	\$26,843.62	\$26,843.62	
	REFUND	\$1,960.67		
	BOOKS	\$200.00		
	CYM VBS REGISTRATION	\$270.00		
	SUBTOTAL	\$29,359.20	\$26,843.62	
TOTAL		\$507,766.08		
GRAND TOTAL		\$507,766.08	\$188,106.97	

Audited on Jan 24 2012
By Lillian Kuo

EXPENSES		NOTE
ADMINISTRATION		
*ADMINISTRATIVE SALARY	\$9,648.00	
*CLEANING	\$11,277.71	
*UTILITIES	\$8,061.82	
*PROPERTY TAX	\$3,370.99	
*LIABILITY INSURANCE	\$4,295.57	
*WORKER COMP INSURANCE	\$700.08	
*SECURITY	\$722.39	
EFCGA 10% TITHE	\$31,489.12	
BUILDING		
*MAINTENANCE	\$21,436.75	*TREE TRIMMING/PEST CONTROL/PAINTING. \$ 15,475.00 TOTAL
*REPAIR	\$7,165.84	
CHILDREN MINISTRY	\$29,084.73	*DIRECTOR SALARY: \$ 24,000.00/YR.
OFFICE		
*INTERNET SERVICES	\$719.40	
*EQUIPMENT/LEASE	\$4,259.08	*COPY MACHINE LEASE/NEW DINING TABLE/BASKETBALL HOOP
*SUPPLIES	\$862.12	
*PHONE	\$2,025.38	*CHURCH MAIN LINE AND PASTOR HSU CELL PHONE.
OTHERS		
*ADVERTISEMENT	\$1,073.78	
*AUTO GAS	\$1,194.18	
*BANK CHARGE(CHECK)	\$133.01	
*CHOIR	\$5,800.00	
*KITCHEN SUPPLIES	\$3,802.09	
*BOOKS AND EDUCATION	\$1,167.90	
*FESTIVAL & SPECIAL PROGRAM	\$2,362.06	
*GUEST SPEAKER HONORARIUM	\$23,650.00	
*INSURANCE/MEDICAL & DENTAL	\$11,902.00	
*MEDICAL EXPENSES	\$2,314.18	
*PASTOR'S SALARY	\$110,840.19	
*PASTOR'S PENSION	\$11,465.05	
*ROYALTY FOR WORSHIP SONGS	\$980.00	*FROM '08~'11. REFUNDED \$ 240.00
*SANCTUARY EQUIPMENT & SERVICES	\$3,894.51	
*VISITATION/PUBLIC RELATIONS	\$1,268.51	
TOTAL	\$316,966.44	
GRAND TOTAL EXPENSES	\$505,073.41	
YEAR 2011 BALANCE	\$2,692.67	
CHECKING ACCOUNT ENDING BALANCE	\$154,349.91	

NOTE:

1. CENTRAL ACCOUNT RESERVED FUND BALANCE \$ 111,004.36 AS OF OCT. 10, 2011.



EFC South Bay
Super Markets Coupon Report
 11/30/2011


		<u>Total</u>
Coupon inventory balance- 11/30/2011:		
99 Ranch Super Market	2,165.00	
Hannam Super Market	900.00	
Ralphs Super Market	-	
Marukai Super Markt	<u>980.00</u>	4,045.00
Bank statement balance-11/30/2011		13,755.49
Add:Receipts to be deposited in 12/2011		-
Less:Expenses to be cashed in 12/2011		<u>-</u>
Total		<u>17,800.49</u>

	Bonus Income				Interest	Total
<u>Year</u>	<u>99 Ranch</u>	<u>Hannam</u>	<u>Ralphs</u>	<u>Marukai</u>	<u>Earned</u>	<u>Income</u>
1995	2,750.00	310.00	650.00		14.40	3,724.40
1996	2,400.00	200.00	650.00		44.77	3,294.77
1997	1,800.00	199.50	525.00		43.06	2,567.56
1998	1,500.00	200.00	600.00		62.76	2,362.76
1999	2,300.00	150.00	600.00		45.40	3,095.40
2000	1,320.00	150.00	850.00		95.24	2,415.24
2001	1,020.00	200.00	250.00		53.09	1,523.09
2002	1,260.00	250.00	250.00	450.00	7.09	2,217.09
2003	1,200.00	300.00	100.00	300.00	4.54	1,904.54
2004	720.00	200.00	-	100.00	8.03	1,028.03
2005	900.00	200.00	-	300.00	21.74	1,421.74
2006	900.00	200.00	-	150.00	48.56	1,298.56
2007	900.00	300.00	-	200.00	45.36	1,445.36
2008	840.00	350.00	-	150.00	9.85	1,349.85
2009	1,080.00	450.00	-	100.00	10.19	1,640.19
2010	900.00	300.00	-	50.00	10.99	1,260.99
2011	240.00	250.00	-	50.00	9.60	549.60
Total	<u>22,030.00</u>	<u>4,209.50</u>	<u>4,475.00</u>	<u>1,850.00</u>	<u>534.67</u>	<u>33,099.17</u>

Deduction of Payments :

9/14/01	Transfer to Church Building Fund	(12,000.00)
12/7/04	Purchase of chairs- 30ea	(470.56)
7/24/06	Purchase of chair Caddy- 3ea	(572.07)
8/14/06	Purchase of chairs- 72ea	(1,402.92)
10/11/06	Purchase of tables & chairs for kids	(832.88)
11/30/10	Deluxe check order charge	(20.25)

Income Balance	11/30/2011	<u>17,800.49</u>
-----------------------	------------	-------------------------



EFC SOUTH BAY, FINANCE DEPT. REPORT**YEAR: 2011****BUILDING FUND****DATE: JAN. 29, 2012****BEGINNING BALANCE** \$ **3,149.77****INCOME**

2011 OFFERING \$ 47,836.62

INTEREST \$ 1.95

TOTAL \$ **47,838.57****EXPENSE**

1. BANK MONTHLY MAINTENANCE FEE \$ 192.00

TOTAL \$ **192.00****ENDING BALANCE** \$ **50,796.34****TOTAL** \$ **50,796.34****NOTE:**1. SUPERMARKET COUPON SALES ARE CONSIDERED AS BUILDING FUND.
(SEE THE OTHER STATEMENT)

2. ROSEHILL LOT SALES OF \$ 77,000.00. \$ 22,000.00 WAS RECEIVED IN YEAR 2011.



EFC SOUTH BAY, FINANCE DEPT. REPORT**YEAR: 2011****SABBATICAL FUND****JAN. 29, 2012**

BEGINNING BALANCE		\$	35,028.08
INCOME			
INTEREST EARNED	\$	278.23	\$ 278.23
12 MONTHS CD			
MATURITY 08/02/11			
TOTAL		\$	278.23
EXPENSE		\$	-
TOTAL		\$	-
ENDING BALANCE		\$	35,306.31

